



Rottweg 17 • D 48683 Ahaus  
Tel. (0 25 61) 93 84-0  
Fax (0 25 61) 93 84 36  
Internet: [www.ab-maschinen.de](http://www.ab-maschinen.de)  
E-Mail: [info@ab-maschinen.de](mailto:info@ab-maschinen.de)

Schweißtechnik  
Lagereinrichtungen  
Industriebedarf  
Werksvertretungen  
Gebrauchtmaschinen

## TRUMPF TRUMABEND V 85 (1008-9308446)



**Control type**  
CNC

**Construction year**  
1997

**Machine no.**  
1008-9308446

**Make**  
TRUMPF

**Location**  
Ahaus

\*\* Good/well-maintained condition

\*\* With only approx. 24.825 operating hours (!!)

- in checked conditions - machinevideo -

<https://www.youtube.com/watch?v=g7ISpJVNoQU>

Equipment:

- DELEM CNC control model DA 65, pivoting front left
- CNC-controlled axis adjustment:
  - \* Y1 - Y2 - X - R - I - CNC crowning
- CNC electro-motorized backgauge (X axis)
  - \* with 4 manually adjustable stop fingers
- CNC electro-motorized height adjustment (R axis)
- CNC electro-motorized crowning
- TRUMPF/WILA electro-hydraulic upper tool clamping
- TRUMPF/WILA electro-hydraulic lower tool clamping
- CNC pneumatic die shift (I axis)
- 1x freely movable 2-hand/foot control
- 2x front, movable support arms

- Side safety device (pivoting doors)
- Rear safety device (pivoting doors)
- Spare parts list + Circuit diagram + CE declaration

\* Special accessories included:

- Brand new drive motor
- TRUMPF electric oil cooler for continuous operation

\*\* Additional technical specifications:

- X-axis feed speed: 500 mm/sec.
- R-axis feed speed: 300 mm/sec.
- Z-axis feed speed: 1000 mm/sec.
- X-axis travel range: max. 860 mm
- R-axis travel range: max. 250 mm

## Machine attributes

pressure:	85.0 t
chamfer lenght:	2050 mm
distance between columns:	1750 mm
column arm:	410 mm
table width:	120 mm
stroke:	215 mm
daylighth:	385 mm
ajustment speed:	200 mm/sec
working feed:	1.0 - 10.0 mm/sec
return speed:	135 mm/sec
air pressure:	ca. 6.0 bar
Number of working hours:	ca. 24.825 h
oil volume:	200 l
operating pressure:	340 bar
total power requirement:	11.6 KW
weight of the machine ca.:	7750 kg
range L-W-H:	2680 x 2100 x 2375 mm

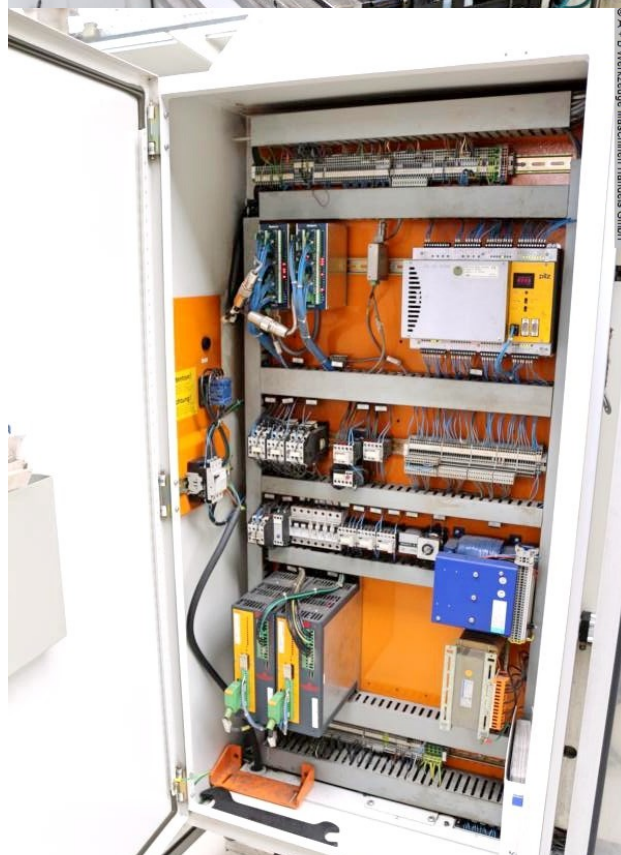
## Machine images





Rottweg 17 • D 48683 Ahaus  
 Tel. (0 25 61) 93 84-0  
 Fax (0 25 61) 93 84 36  
 Internet: [www.ab-maschinen.de](http://www.ab-maschinen.de)  
 E-Mail: [info@ab-maschinen.de](mailto:info@ab-maschinen.de)

Schweißtechnik  
 Lagereinrichtungen  
 Industriebedarf  
 Werksvertretungen  
 Gebrauchtmachines







Rottweg 17 • D 48683 Ahaus  
Tel. (0 25 61) 93 84-0  
Fax (0 25 61) 93 84 36  
Internet: [www.ab-maschinen.de](http://www.ab-maschinen.de)  
E-Mail: [info@ab-maschinen.de](mailto:info@ab-maschinen.de)

Schweißtechnik  
Lagereinrichtungen  
Industriebedarf  
Werksvertretungen  
Gebrauchtmaschinen

