



Rottweg 17 • D 48683 Ahaus
Tel. (0 25 61) 93 84-0
Fax (0 25 61) 93 84 36
Internet: www.ab-maschinen.de
E-Mail: info@ab-maschinen.de

Schweißtechnik
Lagereinrichtungen
Industriebedarf
Werksvertretungen
Gebrauchtmaschinen

PLACKE EQPB 2 - 50/1275 (1008-9308409)



Control type
CNC

Construction year
2004

Machine no.
1008-9308409

Make
PLACKE

Location
Ahaus

** current new price approx. 80.000 euros

** special price on request

** good / well-maintained condition (!!)

- in checked condition - machine video -

<https://www.youtube.com/watch?v=5L8L2AYv0PU>

PLACKE electro-hydraulic CNC press brake
specially developed for the production of small parts

The advantages:

- ? Low energy consumption
- ? High operating comfort
- ? Wide range of applications
- ? Fast, robust, low-noise
- ? With CNC control as standard

Equipment:

- CNC electro-hydraulic press brake with 1x working cylinder
- DELEM CNC control model "DM 51"
- CNC controlled axis: Y1 - Y2 - X
- CNC electro-motorized back stop
- * Travel path: X = max. 600 mm
- * Travel speed X axis .. max. 300 mm/s
- * Positioning accuracy .. +/- 0.02 mm
- * with 2x manually adjustable stop fingers (R+Z axis)
- WILA standard - manual upper tool clamping
- WILA standard - manual lower tool clamping
- PLACKE safety device at the front: light barrier
- side protective device (swivel doors)
- rear protective device (swivel + lockable door)
- front storage area
- side sorting system for bending tools
- 1x freely movable foot control
- original operating instructions including circuit and hydraulic diagram

Machine attributes

| | |
|---------------------------|-----------------------|
| pressure: | 50.0 t |
| chamfer lenght: | 1275 mm |
| distance between columns: | 1040 mm |
| column arm: | 250 mm |
| ram stroke speed: | 225 mm/sec |
| work speed: | 0 - 9.8 mm/sec |
| return speed: | 160 mm/sec |
| work stroke: | 215 mm |
| daylighth: | 512 mm |
| table height: | 800 mm |
| back stop - adjustable: | 600 mm |
| control: | DELEM DM 51 |
| operating pressure: | max. 300 bar |
| oil volume: | 150 ltr. |
| voltage: | 400 V |
| engine output: | 6.0 kW |
| Weight: | 4300 kg |
| range L-W-H: | 1930 x 1510 x 2390 mm |

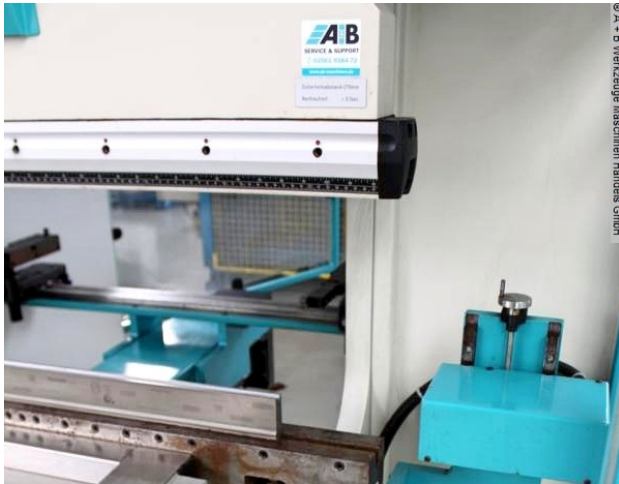
Machine images



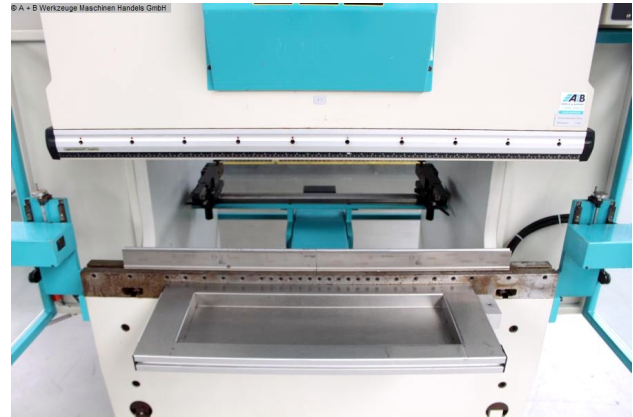


Rottweg 17 • D 48683 Ahaus
 Tel. (0 25 61) 93 84-0
 Fax (0 25 61) 93 84 36
 Internet: www.ab-maschinen.de
 E-Mail: info@ab-maschinen.de

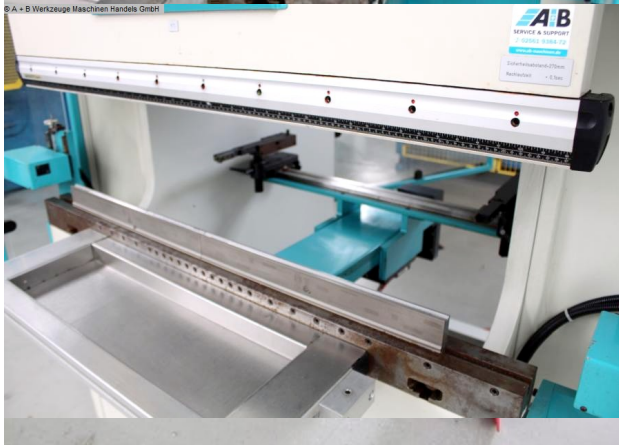
Schweißtechnik
 Lagereinrichtungen
 Industriebedarf
 Werksvertretungen
 Gebrauchtmachines



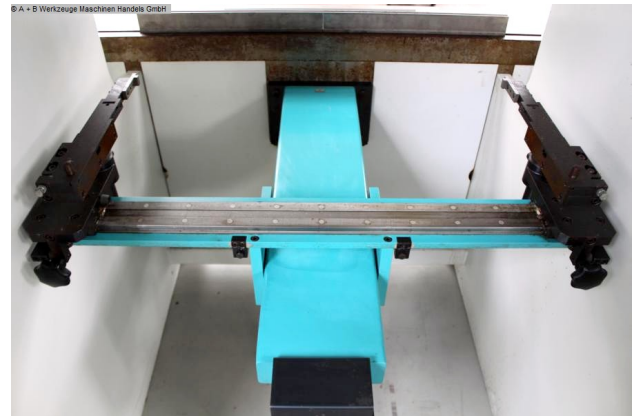
© A + B Werkzeuge Maschinen Handels GmbH



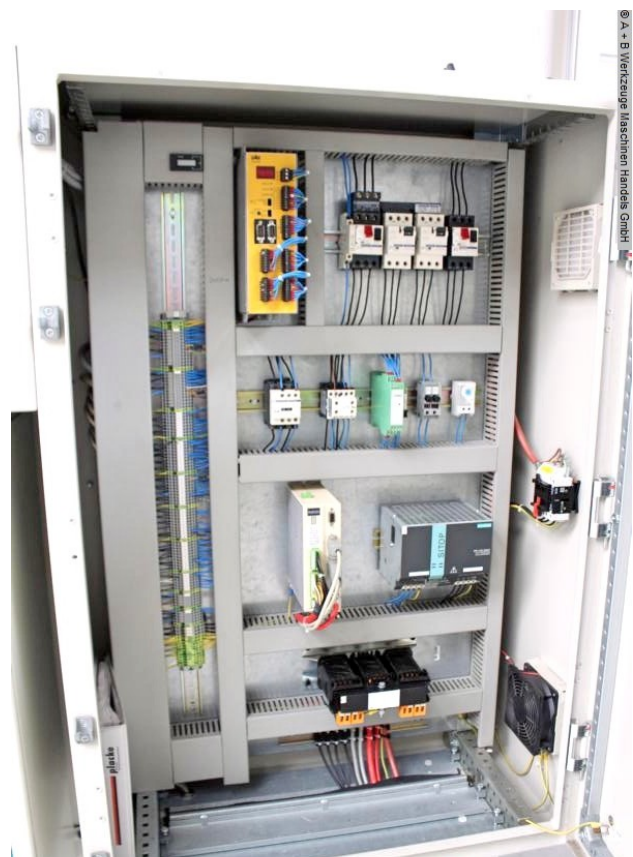
© A + B Werkzeuge Maschinen Handels GmbH



© A + B Werkzeuge Maschinen Handels GmbH



© A + B Werkzeuge Maschinen Handels GmbH



© A + B Werkzeuge Maschinen Handels GmbH



Rottweg 17 • D 48683 Ahaus
Tel. (0 25 61) 93 84-0
Fax (0 25 61) 93 84 36
Internet: www.ab-maschinen.de
E-Mail: info@ab-maschinen.de

Schweißtechnik
Lagereinrichtungen
Industriebedarf
Werksvertretungen
Gebrauchtmaschinen

© A + B Werkzeuge Maschinen Handels GmbH

placke GmbH
Werkzeug-
Blechbearbeitungsmaschinen

Auf dem Platen 7 – 11
D - 49326 Melle
Tel.: 05422 - 45015
Fax.: 05422 - 43637
e-mail: info@placke.de
<http://www.placke.de>

| | | | |
|------------------|----------------|------------------|-----------------|
| Modell | E0PB 2 | Spannung | 400 Volt |
| Typ | 50/1275 | Frequenz | 50 Hz |
| Baujahr | 2004 | Stromstärke | 12 A |
| Maschinen Nr. | P 152 | Anschlußleistung | 6 kW |
| Presskraft | 500 kN | Betriebsdruck | 300 bar |
| Antriebsleistung | 4 kW | Eilgang ab | 225 mm/s |
| Ausladung | 250 mm | Arbeitsgang | 9,8 mm/s |
| Stoßelhub | 215 mm | Rückzug | 160 mm/s |
| Einbauhöhe | 512 mm | | |
| Gewicht | 4,3 t | | |

Betriebsanleitung beachten !

CE