



Rottweg 17 • D 48683 Ahaus
Tel. (0 25 61) 93 84-0
Fax (0 25 61) 93 84 36
Internet: www.ab-maschinen.de
E-Mail: info@ab-maschinen.de

Schweißtechnik
Lagereinrichtungen
Industriebedarf
Werksvertretungen
Gebrauchtmaschinen

HACO HSLX 4006 (1008-9325354)



Control type
CNC

Construction year
2009

Machine no.
1008-9325354

Make
HACO

Location
Ahaus

- ** Machine made from light metal production (ALU)
- ** good condition
- ** including special accessories such as sheet metal holding device

- in checked condition - machine video -
<https://www.youtube.com/watch?v=pv7RRijDXJA>

Furnishing:

- electro-hydraulic/blade-guided guillotine shears
- HACO CNC control model SC 70, swiveling at the front left
- * Pre-selection positioning of the backgauge
- * Digital display of actual position value
- * electro-hydraulic cutting angle adjustment
- * electro-hydraulic cutting gap adjustment
- * programmable retraction from the backgauge
- * Programmable cutting length limit
- * Emergency switch
- electro-hydraulic cutting gap adjustment
- electro-hydraulic cutting angle adjustment

- electro-motorized back gauge, on ball screws
- hydraulic hold-down devices
- front finger protection
- Ball rollers in the support table
- 1x side stop, with mm scale
- 1x freely movable foot switch
- rear guard
- original operating instructions including CE declaration

** Special accessories included:

- pneumatic sheet metal holding device for thin sheet metal blanks
- * for sheet thicknesses up to max. 4.0 mm
- * optimal positioning of thin sheets

Machine attributes

sheet width:	4050 mm
plate thickness:	6.50 mm
thickness at "Niro-steel":	4.00 mm
back stop - adjustable:	1000 mm
no. of strokes:	6 - 11 Hub/min
work height max.:	880 mm
Control:	SC 70
cutting angle:	0.5 - 3.0 °
down holder:	23 Stück
engine output:	11.0 kW
weight of the machine ca.:	7500 kg
range L-W-H:	4950 x 1950 x 1720 mm

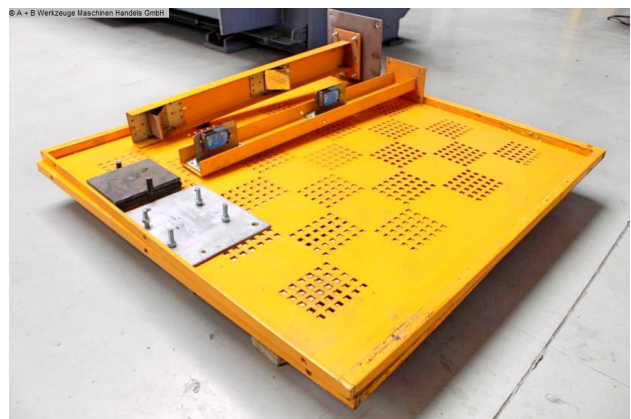
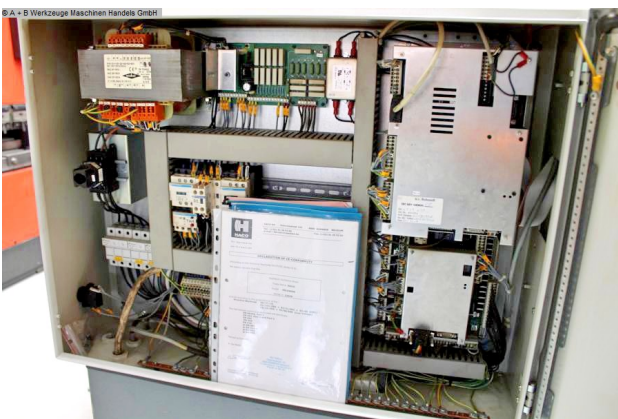
Machine images





Rottweg 17 • D 48683 Ahaus
Tel. (0 25 61) 93 84-0
Fax (0 25 61) 93 84 36
Internet: www.ab-maschinen.de
E-Mail: info@ab-maschinen.de

Schweißtechnik
Lagereinrichtungen
Industriebedarf
Werkvertretungen
Gebrauchsmaschinen





Rottweg 17 • D 48683 Ahaus
Tel. (0 25 61) 93 84-0
Fax (0 25 61) 93 84 36
Internet: www.ab-maschinen.de
E-Mail: info@ab-maschinen.de

Schweißtechnik
Lagereinrichtungen
Industriebedarf
Werksvertretungen
Gebrauchtmaschinen

