



Rottweg 17 • D 48683 Ahaus
Tel. (0 25 61) 93 84-0
Fax (0 25 61) 93 84 36
Internet: www.ab-maschinen.de
E-Mail: info@ab-maschinen.de

Schweißtechnik
Lagereinrichtungen
Industriebedarf
Werksvertretungen
Gebrauchtmaschinen

FASTI 904-80-25 (1008-9308382)



Control type
CNC

Machine no.
1008-9308382

Make
FASTI

Location
Ahaus

** Machine from a vocational training center (Chamber of Crafts)

** good / well-maintained condition

** with only approx. 1.300 operating hours (!!)

- in checked condition - machine video -

https://www.youtube.com/watch?v=dDqs4LioL_g

Furnishing:

- CNC electro-hydraulic press brake
- DELEM CNC control - model DA 58
- * Swivel control panel, front left
- * 2D graphical programming & product display
- * Tool & program library
- CNC axis control: Y1 - Y2 - X axis + motorized crowning
- electro-motorized & controlled backgauge
- * with 2x manually movable stop fingers (R+Z axis)
- manual upper tool & lower tool clamping
- split upper and lower tools
- 2x stable, front support arms - movable including mm scale

- split upper tool
- 1x freely movable 2-hand operation
- 1x freely movable foot switch
- side protection device (pivoting doors)
- rear protection device (pivoting door)
- original operating instructions for the control

* Machine link:

<https://mhp.logotech.de/hpm/v7/Datenblatt/datenblatt.php?machineno=1008-9308382>

Machine attributes

pressure:	80.0 t
chamfer length:	2550 mm
distance between columns:	2060 mm
adjustment speed:	90.0 mm/sec
working feed:	10.0 mm/sec
return speed:	90.0 mm/sec
stroke:	140 mm
work height max.:	930 mm
daylight:	375 mm
Number of working hours:	ca. 1.300 h
total power requirement:	8.5 kW
weight:	6300 kg
range L-W-H:	2830 x 1900 x 2500 mm

Machine images





Rottweg 17 • D 48683 Ahaus
Tel. (0 25 61) 93 84-0
Fax (0 25 61) 93 84 36
Internet: www.ab-maschinen.de
E-Mail: info@ab-maschinen.de

Schweißtechnik
Lagereinrichtungen
Industriebedarf
Werkvertretungen
Gebrauchtmachines



© A + B Werkzeuge Maschinen Handels GmbH



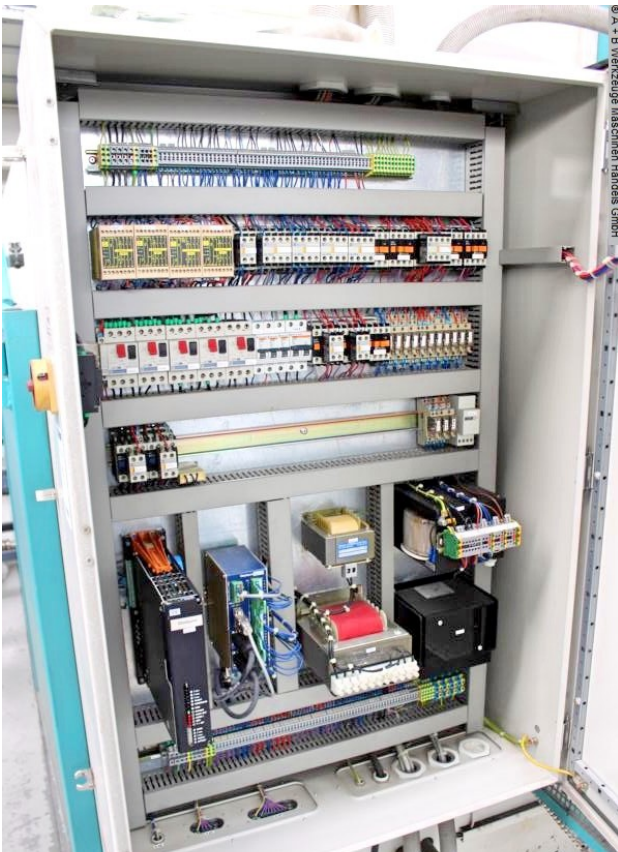
© A + B Werkzeuge Maschinen Handels GmbH



© A + B Werkzeuge Maschinen Handels GmbH



© A + B Werkzeuge Maschinen Handels GmbH



© A + B Werkzeuge Maschinen Handels GmbH



© A + B Werkzeuge Maschinen Handels GmbH



Rottweg 17 • D 48683 Ahaus
Tel. (0 25 61) 93 84-0
Fax (0 25 61) 93 84 36
Internet: www.ab-maschinen.de
E-Mail: info@ab-maschinen.de

Schweißtechnik
Lagereinrichtungen
Industriebedarf
Werksvertretungen
Gebrauchtmaschinen

© A + B Werkzeuge Maschinen Handel GmbH

 FASTI - WERK Carl Aug. Fastenrath GmbH & Co. KG D-42929 Wermelskirchen 	Maschinen-Nr. 97 904 015
	Modell & Größe 904 - 80-25
	Leistung 2500 bei 400 N/mm ² Zugfestigkeit
	Gewicht in kg 5300