



Rottweg 17 • D 48683 Ahaus  
Tel. (0 25 61) 93 84-0  
Fax (0 25 61) 93 84 36  
Internet: www.ab-maschinen.de  
E-Mail: info@ab-maschinen.de

Schweißtechnik  
Lagereinrichtungen  
Industriebedarf  
Werksvertretungen  
Gebrauchtmaschinen

## FASTI 904-125/30 (1008-9308428)



**Control type**  
CNC

**Machine no.**  
1008-9308428

**Make**  
FASTI

**Location**  
Ahaus

- \*\* From a maintenance workshop
- \*\* Good / well-maintained condition
- \*\* With only approx. 14.100 operating hours (!!)

### Equipment:

- CNC electro-hydraulic press brake
- DELEM CNC control - model "DA 58"
- \* Swiveling control panel, front left
- \* 2D graphic programming & product display
- \* Tool & program library
- CNC-controlled axes:
  - \* Y1+Y2 / X1+X2 / R1+R2 / Z1+Z2 / CNC crowning
- CNC electro-motorized backgauge (X axes)
- \* Stop system with 2x CNC-controlled gantries
- CNC electro-motorized height adjustment of the backgauge (R axes)
- CNC electro-motorized adjustment of the stop fingers (Z axes)
- Manual upper tool clamping
- Manual lower tool clamping
- Various split upper and lower tools

- 2x stable, movable Front support arms
- 1x freely movable 2-hand/foot control
- Side guard (swinging doors)
- Rear guard (swinging door)
- Original operating instructions + control unit
- Manufacturer's CE declaration

## Machine attributes

pressure:	125 t
chamfer length:	3050 mm
distance between columns:	2550 mm
adjustment speed:	90.0 mm/sec
working feed:	10.0 mm/sec
return speed:	75.0 mm/sec
stroke:	140 mm
daylight:	375 mm
column arm:	250 mm
table width:	90.0 mm
work height max.:	ca. 950 mm
Number of working hours:	14.100 h
total power requirement:	13.5 kW
weight:	8500 kg
range L-W-H:	3630 x 2300 x 2505 mm

## Machine images





Rottweg 17 • D 48683 Ahaus  
Tel. (0 25 61) 93 84-0  
Fax (0 25 61) 93 84 36  
Internet: [www.ab-maschinen.de](http://www.ab-maschinen.de)  
E-Mail: [info@ab-maschinen.de](mailto:info@ab-maschinen.de)

Schweißtechnik  
Lagereinrichtungen  
Industriebedarf  
Werkvertretungen  
Gebrauchtmachines

© A + B Werkzeuge Maschinen Handels GmbH



© A + B Werkzeuge Maschinen Handels GmbH



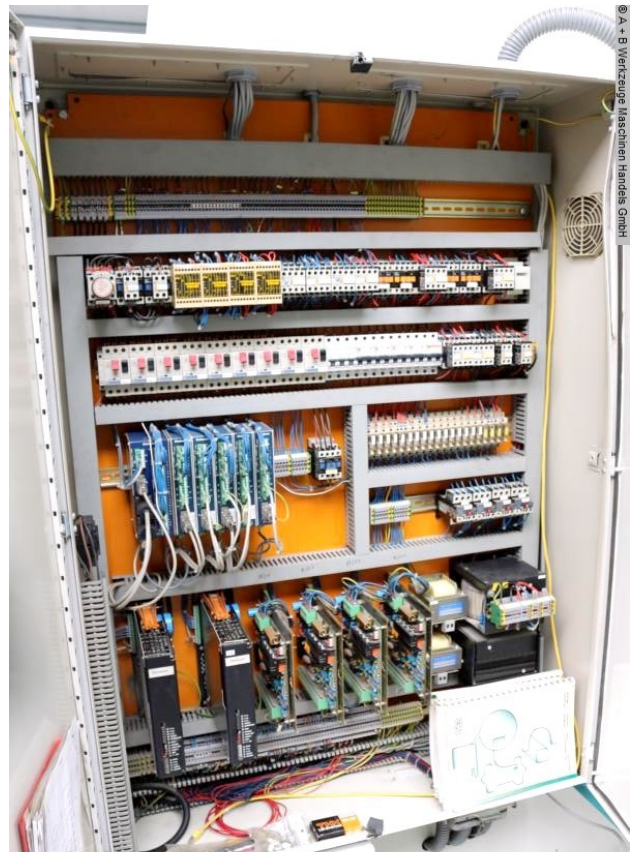
© A + B Werkzeuge Maschinen Handels GmbH



© A + B Werkzeuge Maschinen Handels GmbH



© A + B Werkzeuge Maschinen Handels GmbH



© A + B Werkzeuge Maschinen Handels GmbH



Rottweg 17 • D 48683 Ahaus  
Tel. (0 25 61) 93 84-0  
Fax (0 25 61) 93 84 36  
Internet: [www.ab-maschinen.de](http://www.ab-maschinen.de)  
E-Mail: [info@ab-maschinen.de](mailto:info@ab-maschinen.de)

Schweißtechnik  
Lagereinrichtungen  
Industriebedarf  
Werksvertretungen  
Gebrauchtmaschinen

