



Rottweg 17 • D 48683 Ahaus
Tel. (0 25 61) 93 84-0
Fax (0 25 61) 93 84 36
Internet: www.ab-maschinen.de
E-Mail: info@ab-maschinen.de

Schweißtechnik
Lagereinrichtungen
Industriebedarf
Werksvertretungen
Gebrauchtmaschinen

FALKEN DPM 1040-80 (1008-8371062)



Control type
konventionell

Machine no.
1008-8371062

Make
FALKEN

Location
Ahaus

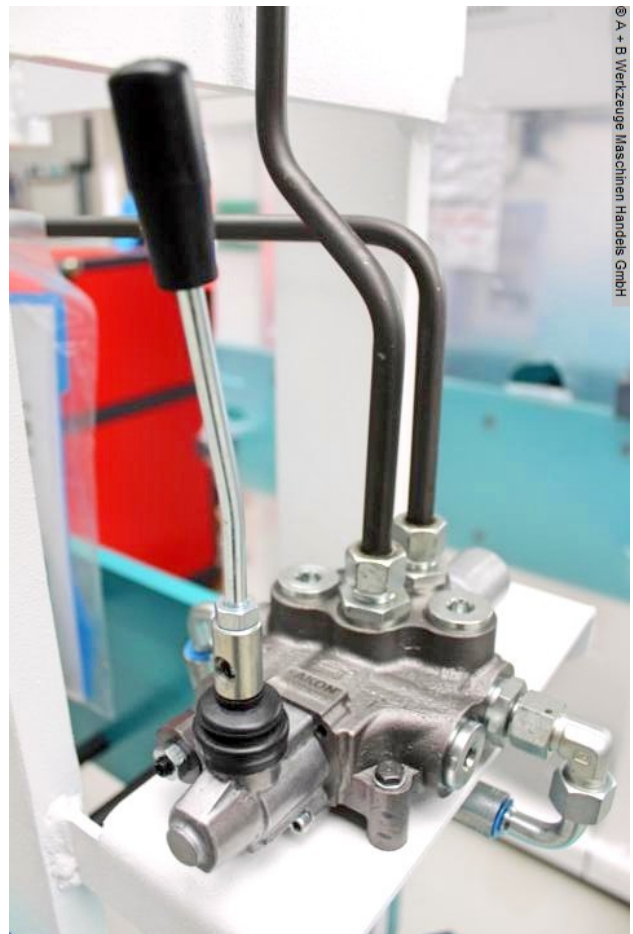
Furnishing:

- Robust electro-hydraulic workshop press, with fixed cylinder
- Ideal for aligning axles, shafts, etc.,
but also for pressing in and out of bolts, bearings, bushings and much more.
- Robust welded steel construction for high demands
- Table height adjustment via piston rod
- * including round steel chain and 2x locking bolts
- * Piston rod with metric socket
- 1x set of V-block prism supports
- Manometer for pressure display
- simply constructed hand control with:
 - * 1x delivery speed
 - * 1x working speed
 - * 1x retreat speed
- Piston can be stopped in any position
- Hydraulic tank mounted on the side
- Operation manual

Machine attributes

pressure:	80.0 t
stroke:	250 mm
table surface area:	1040 x 260 mm
column travel between the guideways:	1040 mm
adjustment speed:	8.0 mm/sec
working feed:	5.0 mm/sec
return speed:	10.0 mm/sec
engine output:	5.5 kW
weight of the machine ca.:	835 kg.
dimensions of the machine ca.:	1810 x 700 x 2100 mm

Machine images



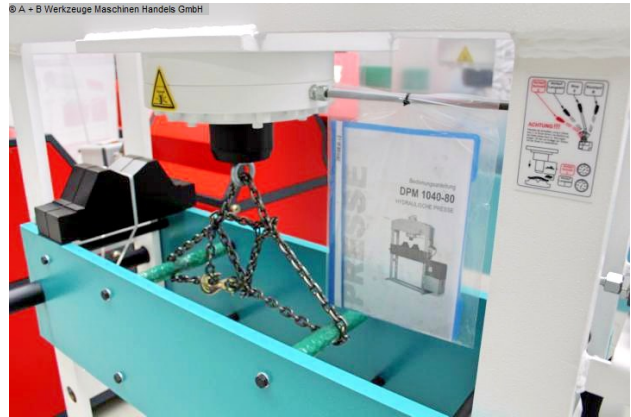


Rottweg 17 • D 48683 Ahaus
Tel. (0 25 61) 93 84-0
Fax (0 25 61) 93 84 36
Internet: www.ab-maschinen.de
E-Mail: info@ab-maschinen.de

Schweißtechnik
Lagereinrichtungen
Industriebedarf
Werkvertretungen
Gebrauchtmachines



© A - B Werkzeuge Maschinen Handels GmbH



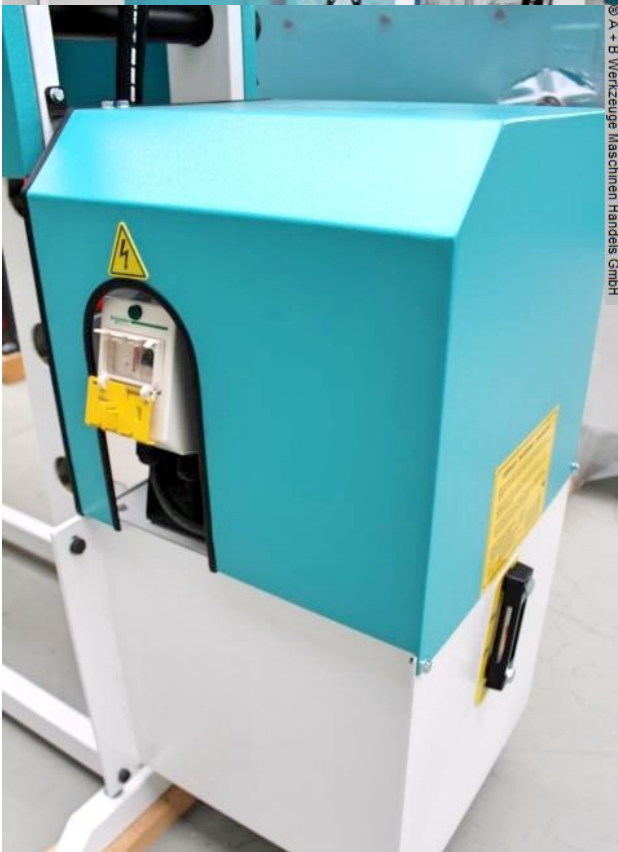
© A - B Werkzeuge Maschinen Handels GmbH



© A - B Werkzeuge Maschinen Handels GmbH



© A - B Werkzeuge Maschinen Handels GmbH



© A - B Werkzeuge Maschinen Handels GmbH