



Rottweg 17 • D 48683 Ahaus  
Tel. (0 25 61) 93 84-0  
Fax (0 25 61) 93 84 36  
Internet: [www.ab-maschinen.de](http://www.ab-maschinen.de)  
E-Mail: [info@ab-maschinen.de](mailto:info@ab-maschinen.de)

Schweißtechnik  
Lagereinrichtungen  
Industriebedarf  
Werksvertretungen  
Gebrauchtmaschinen

## ERMAK MICROBEND 10.40 (1008-9308425)



**Control type**  
CNC

**Construction year**  
2011

**Machine no.**  
1008-9308425

**Make**  
ERMAK

**Location**  
Ahaus

- \*\* from a maintenance workshop
- \*\* good condition (!!)
- \*\* New price ~ 28.000 euros
- \*\* Special price on request

- in checked condition - machine video -  
<https://www.youtube.com/watch?v=cTVHAQdmwLA>

### Equipment:

- CNC electro-hydraulic press brake
- CYBELEC CNC control model "DNC 660S"
- \* numerical control unit
- \* monochrome screen
- \* tool & product library
- \* swiveling, front left
- CNC controlled axes: Y1 - Y2 - X axis
- CNC electro-motorized back stop (X axis)
- \* with 2x manually adjustable stop fingers (R+Z axis)
- \* stop guided on ball screws

- FIESSLER AKAS laser protective device in front of the machine
- AMADA/PROMECAM upper tool holder
- \* including 5x new spacers, with wedge crowning (UKB 50.666)
- \* including 5x new clamping jaws, with quick-clamping device (UKB 50.551)
- \* including 1x ROLLERI upper tool 85° (835 mm)
- AMADA/PROMECAM lower tool holder
- \* including UKB 4-V die 85° - reversible (835 mm)
- \* including ROLLERI die adapter rail for AMADA tools
- \* including 1x die adapter rail for WILA/TRUMPF tools
- Safety device = light barrier behind the machine
- 2x front, adjustable support arms
- 1x freely movable double foot switch including emergency stop button
- CE mark/declaration of conformity
- Operating instructions
- Transport frame for forklift (selfmade)

## Machine attributes

pressure:	40.0 t
chamfer length:	1000 mm
distance between columns:	800 mm
column arm:	250 mm
ram stroke speed:	110 mm/sec
work speed:	10.0 mm/sec
return speed:	105 mm/sec
work stroke:	100 mm
daylighth:	308 mm
table height:	800 mm
table width:	90.0 mm
back stop - adjustable:	500 mm
control:	DNC 660S
oil volume:	60.0 ltr.
voltage:	400 Volt
engine output:	4.75 kW
Weight:	2750 kg
range L-W-H:	2450 x 2140 x 2200 mm

## Machine images

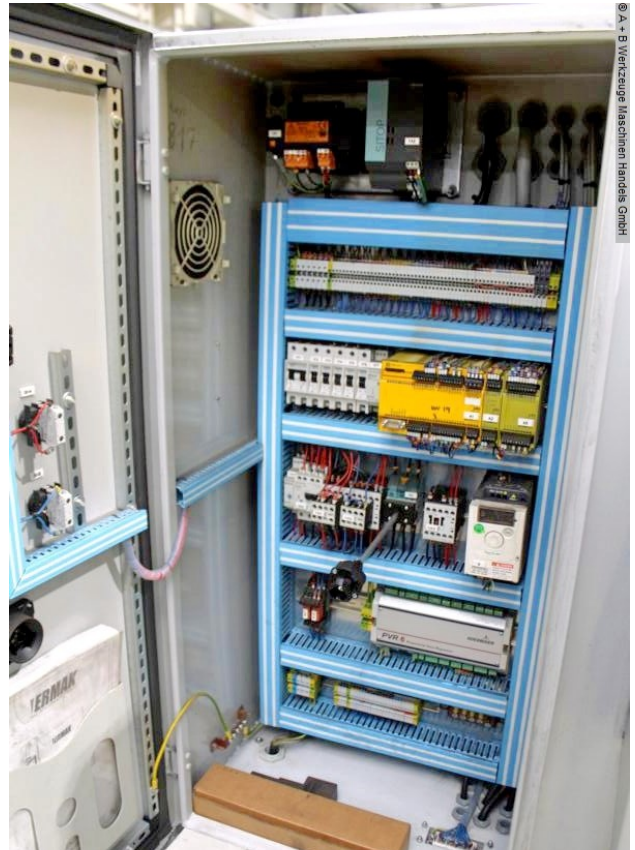






Rottweg 17 • D 48683 Ahaus  
Tel. (0 25 61) 93 84-0  
Fax (0 25 61) 93 84 36  
Internet: [www.ab-maschinen.de](http://www.ab-maschinen.de)  
E-Mail: [info@ab-maschinen.de](mailto:info@ab-maschinen.de)

Schweißtechnik  
Lagereinrichtungen  
Industriebedarf  
Werkvertretungen  
Gebrauchsmaschinen





Rottweg 17 • D 48683 Ahaus  
Tel. (0 25 61) 93 84-0  
Fax (0 25 61) 93 84 36  
Internet: [www.ab-maschinen.de](http://www.ab-maschinen.de)  
E-Mail: [info@ab-maschinen.de](mailto:info@ab-maschinen.de)

Schweißtechnik  
Lagereinrichtungen  
Industriebedarf  
Werksvertretungen  
Gebrauchtmaschinen

© A + B Werkzeuge Maschinen Handels GmbH

<b>ERMAK</b> CE		
TYP.	MICRO-BEND 1000X40	
BAUJAHR	2011	
MASCHINEN Nr.	03370-X549LT	
KAPAZITÄT	40	TON
GEWICHT	2750	Kg.
SENKGESCHWINDIGKEIT	120	mm/s.
NACHLAUFWEG	500	mm.
LEISTUNG	4	kW.
SPANNUNG	380	V.
IP	54	
BREITE	2140	mm.
LÄNGE	2450	mm.
HÖHE	2200	mm.
<b>ERMAKSAN MAKİNA SANAYİ VE TİC. A.Ş.</b>		
Organize Sanayi Bölgesi Lacivert Cadde No:6 BURSA / TÜRKİYE		
Tel: (00 90 224) 294 75 00 Fax: (00 90 224) 294 75 46		
web: <a href="http://www.ermaksan.com.tr">www.ermaksan.com.tr</a> e-mail: <a href="mailto:ermaksan@ermaksan.com.tr">ermaksan@ermaksan.com.tr</a>		
ERM 043	Rev. 01	