



Rottweg 17 • D 48683 Ahaus
Tel. (0 25 61) 93 84-0
Fax (0 25 61) 93 84 36
Internet: www.ab-maschinen.de
E-Mail: info@ab-maschinen.de

Schweißtechnik
Lagereinrichtungen
Industriebedarf
Werksvertretungen
Gebrauchtmaschinen

DURMA SB 4006 HH (1008-9325363)



Control type
NC

Construction year
2008

Machine no.
1008-9325363

Make
DURMA

Location
Ahaus

** New price ~ 50,000 euros (!!)

** Special price on request

NC electro-hydraulic swing cut shears

* with DURMA "ENC 100 M" control

* manual cutting gap adjustment (eccentric)

* including pneumatic sheet holding device for thin sheet metal cuts

Equipment:

- robust electro-hydraulic swing cut shears

- including DURMA "ENC 100M" NC control unit

* Back stop pre-selection - X axis

* Quantity

* Cutting length limitation

* Pivoting operation, left front

- Monoblock welded steel construction made of high-quality steel

- CNC electro-motorized back stop

* with ball screw and linear guides

* Automatic retraction of the back stop during the cutting process

- Light barrier protection for access to the rear of the machine
- manual cutting gap adjustment via eccentric
- high-performance hydraulic cylinder made of SAM 1040 material
- high-quality chrome-plated and finely ground hydraulic piston
- split, fold-up finger guard 1,000 mm
- easy handling of the sheets via ball rollers in the table
- 1x long side stop including mm scale and tilting cam
- 3x front support arms
- 1x freely movable foot switch
- operating instructions

** Special accessories included:

- pneumatic sheet holding device for cutting thin sheet metal
- up to max. material thickness - ST .. 3.0 mm

Machine attributes

sheet width:	4100 mm
plate thickness:	6.0 mm
thickness at "Niro-steel":	4.0 mm
no. of strokes:	12 - 24 Hub/min
cutting angle:	1 ° 30
work height max.:	865 mm
back stop - adjustable:	1.0 - 1000 mm
down holder:	20 Stück
Control:	ENC 100 M
column arm:	50.0 mm
oil volume:	200 ltr
total power requirement:	15.0 kW
weight:	11460 kg
range L-W-H:	5230 x 2250 x 2150 mm

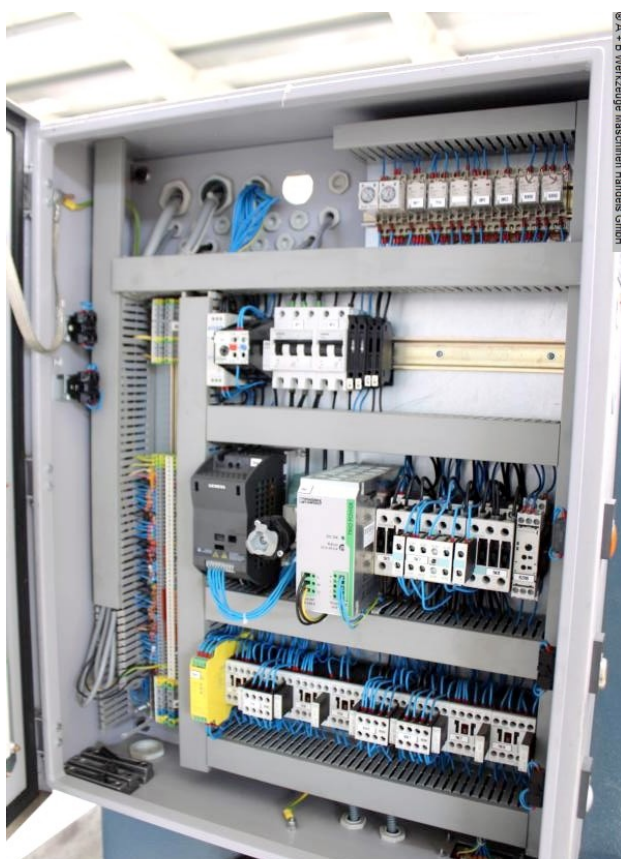
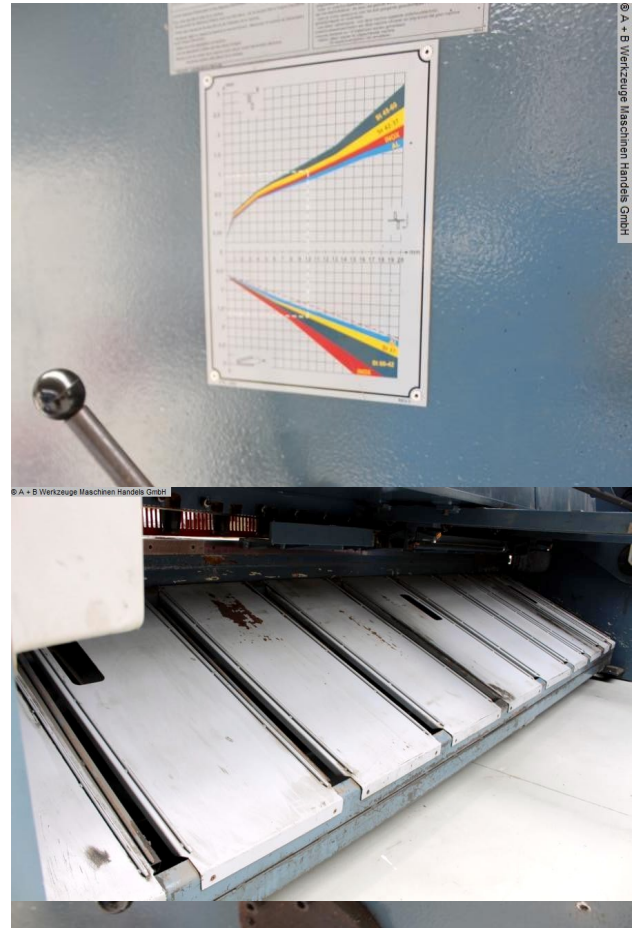
Machine images





Rottweg 17 • D 48683 Ahaus
 Tel. (0 25 61) 93 84-0
 Fax (0 25 61) 93 84 36
 Internet: www.ab-maschinen.de
 E-Mail: info@ab-maschinen.de

Schweißtechnik
 Lagereinrichtungen
 Industriebedarf
 Werksvertretungen
 Gebrauchtmachines





Rottweg 17 • D 48683 Ahaus
Tel. (0 25 61) 93 84-0
Fax (0 25 61) 93 84 36
Internet: www.ab-maschinen.de
E-Mail: info@ab-maschinen.de

Schweißtechnik
Lagereinrichtungen
Industriebedarf
Werksvertretungen
Gebrauchtmachines

© A + B Werkzeuge Maschinen Handels GmbH

TYPE		35 4006	
URETIM YILI BAUJAHR ANNO DI COSTRUZIONE ROK VYROBY ROK PRODUKCI TILVERKJINGSAR	MANUFACTURING YEAR ANO DE FABRICACION ANNEE FABRICATION VALMISTUSVUOSI BYGGEAR BOUWJAAR	2008	
SERI NO MACHINE MATRICOLA VYRONBI ČÍSLO NUMER MASZYN SERIENUMMER	MACHINE NO NDE SERIE NDE SERIE VALMISTUSNUMERO MACHINE SERIE-NUMMER	607708019	
KAPASITE KAPAZITAT CAPACITA CAPACITA NACISK KAPACITET	CAPACITY CAPACIDAD CAPACITE TEHO KAPASITET CAPACITEIT	4100x6mm	
STROK HUB CORSO ZDVH SKOK SKOK	STROKE CARRERA COURSE ISKUNITUUS SLAG SLAG	115	mm
VURUS SAYISI HUBZAHN PRO MIN COLPI AL MINUTO POČET ZDVHU ZA MIN CYKLE NA MINUTE SLAG/MINUT	STROKE IN A MINUTE GOLPES POR MINUTO COUPS PAR MINUTE ISKULUKU SLAGANTALL PR. MIN AANTAL SLAGEN/MIN	12	1/min
YAG KAPASITESI OLTANK KAPAZITAT CAPACITA' SERBATOIO OLEJAVÁ NAPLN POJEMNOŚĆ ZBIORNIKA OLJETANKENS RYM	LUBRICANT CAPACITY CAPACIDAD DEL LUBRICANTE CAPACITE RESERVOIR OLJYMAARA KAPACITET OLJETANK TANK INHOUD	170	lt
UST KALIP AĞIRLIĞI GEWICHT OBERWERKZEUG PESO UTENSILE SUPERIORE HMOTNOST H NASTROJE CIEŻAR NARZ. GÓRNEGO ÖVERVERKTYGETS VIKT	TOP TOOL WEIGHT PESO DEL PUNZON POIDS DU POINSON YLATYOKALUN PAINO VEKT ÖVERVERKTOEY GEWICHT BOVENSTEMPEL	-	Kg
ALT KALIP AĞIRLIĞI GEWICHT UNTERWERKZEUG PESO UTENSILE INFERIORE HMOTNOST S NASTROJE CIEŻAR NARZ. DOLNEGO ÖNDERVERKTYGETS VIKT	BOTTOM TOOL WEIGHT PESO DE LA MATRIZ POIDS DE LA MATRICE ALATYOKALUN PAINO VEKT ÖNDERVERKTOEY GEWICHT MATRIJS	-	Kg
EN BREITE LARGHEZZA ŠÍŘKA SZEROKOŚĆ DJUP	WIDTH ANCHO LARGEUR LEVEYS BREDE BREEDTE	3600	mm
BOY LÄNGE LUNGHEZZA DĚLKA DŁUGOŚĆ LÄNGD	LENGTH LARGO LONGUEUR PITUUS LENGDE LENGTE	5200	mm
YÜKSEKLİK HÖHE ALTEZZA VÝŠKA WYSOKOŚĆ HÖJD	HEIGHT ALTO HAUTEUR KORKEUS HOEYDE HÖGDTE	2150	mm
AĞIRLIK GEWICHT PESO HMOTNOST CIEŻAR MÄSKINVIKT	WEIGHT PESO POIDS PAINO VEKT GEWICHT	11500	Kg
<p>DURMAZLAR MAKİNA SANAYİ ve TİCARET A.Ş. Organize Sanayi Bölgesi 75. Yıl Bulvarı BURSA / TÜRKİYE Tel: +90 224 219 18 00 pbx. Fax : +90 224 242 75 80 MADE IN TURKEY</p>			