



Rottweg 17 • D 48683 Ahaus
Tel. (0 25 61) 93 84-0
Fax (0 25 61) 93 84 36
Internet: www.ab-maschinen.de
E-Mail: info@ab-maschinen.de

Schweißtechnik
Lagereinrichtungen
Industriebedarf
Werksvertretungen
Gebrauchtmaschinen

DURMA AD-R 30.135 (1008-9308418)



Control type
CNC

Construction year
2011

Machine no.
1008-9308418

Make
DURMA

Location
Ahaus

** good condition (!!)

** current new price approx. 80.000 euros

** special price on request

- in checked condition - machine video -

<https://www.youtube.com/watch?v=dyv7iQXcRt4>

Equipment:

- electro-hydraulic CNC press brake
- two synchronized cylinders with "HIGH PERFORMANCE" hydraulic components
- with CYBELEC CNC control - "DNC 880S"
- * 2D graphic display for display and multiple simulation
- * graphic 2D programming
- * easy handling
- * automatic bending sequence calculation and collision detection
- * large product and tool library
- * automatic tonnage calculation (pressure)
- swiveling operation, front right
- CNC controlled axes: Y1 + Y2 + X + R + CNC crowning

- upper beam with solid, self-lubricating four-way guide
- CNC electro-motorized back stop (X axis)
- * with 2x manually adjustable stop fingers
- * Adjustment range up to max. 650 mm
- CNC electro-motor height adjustment of the rear stop (R axis)
- * Adjustment range up to max. 250 mm
- CNC electro-motor table cambering
- UKB / RAPID pneumatic upper tool clamp
- AMADA lower tool holder, including die shoe
- FIESSLER LASER safety device at the front
- 2x front, movable support arms ("Sliding" system)
- side safety device (swinging doors)
- rear safety device (swinging door)
- 1x freely movable foot switch
- large hydraulic oil tank to keep the operating temperature low
- original operating instructions

Machine attributes

pressure:	135 t
chamfer lenght:	3050 mm
distance between columns:	2600 mm
column arm:	410 mm
ajustment speed:	160 mm/sec
working feed:	10.0 mm/sec
return speed:	120 mm/sec
stroke:	265 mm
dayligh:	530 mm
table height:	900 mm
oil volume:	200 ltr.
control:	DNC 880 S
total power requirement:	15.0 kW
weight of the machine ca.:	10250 kg.
range L-W-H:	4570 x 2360 x 2900 mm

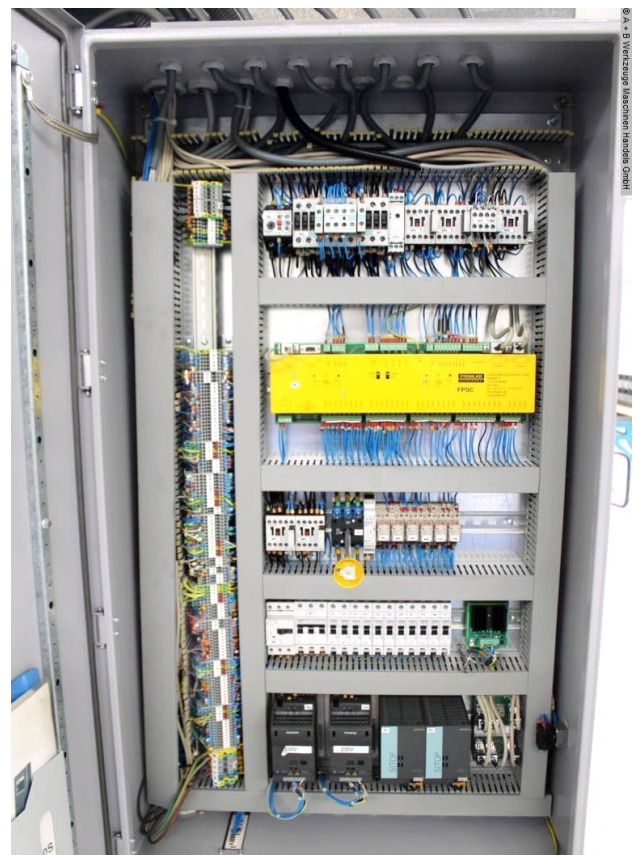
Machine images





Rottweg 17 • D 48683 Ahaus
Tel. (0 25 61) 93 84-0
Fax (0 25 61) 93 84 36
Internet: www.ab-maschinen.de
E-Mail: info@ab-maschinen.de

Schweißtechnik
Lagereinrichtungen
Industriebedarf
Werkvertretungen
Gebrauchsmaschinen





Rottweg 17 • D 48683 Ahaus
 Tel. (0 25 61) 93 84-0
 Fax (0 25 61) 93 84 36
 Internet: www.ab-maschinen.de
 E-Mail: info@ab-maschinen.de

Schweißtechnik
 Lagereinrichtungen
 Industriebedarf
 Werksvertretungen
 Gebrauchtmachines

© A + B Werkzeuge Maschinen Handels GmbH

TYPE		AD-F 30766	
URETIM YILI BAUJAHR ANNO DI COSTRUZIONE ROK VYROBY ROK PRODUKCJI TILLVERKNINGSÅR	- MANUFACTURING YEAR - AÑO DE FABRICACION - ANNEE FABRICATION - VALMISTUSVUOSI - BYGGÅR - BOUWJAAR	2011	
SERİ NO MASCH-NR MATRICOLA VYRONBI ČÍSLO NUMER MASZYN SERIENUMMER	- MACHINE NO - N°DE SERIE - N°DE SERIE - VALMISTUSNUMERO - MASKINNR. - SERIE-NUMMER	782810000	
KAPASİTE KAPAZITAT CAPACITÀ KAPACITA NACISK KAPACITET	- CAPACITY - CAPACIDAD - CAPACITE - TEHO - KAPASITET - CAPACITEIT	8050x36 7011	
STROK HUB CORSA ZDVUH SRÖK SKÖK	- STROKE - CARRERA - COURSE - ISKUNPITUUS - SLAG - SLAG	265	mm
VURUS SAYISI HUBZAHL PRO MIN. COLPI AL MINUTO POČET ZDVUH ZA MIN. CYKLE NA MINUTE SLAG/MINUT	- STROKE IN A MINUTE - GOLPES POR MINUTO - COUPS PAR MINUTE - ISKULIKU - SLAGANTALL PR. MIN. - AANTAL SLAGEN/MIN	-	1/min
YAG KAPASİTESİ ÖL TANK KAPAZİTAT CAPACITÀ SERBATOIO OLEJAVÁ NAPLN POJEMNOSC ZBIORNIKA OLJETANKENS RYMD	- LUBRICANT CAPACITY - CAPACIDAD DEL LUBRICANTE - CAPACITE RESERVOIR - ÖLJYMAÄRÄ - KAPACITET OLJETANK - TANK INHOUD	200	lt
ÜST KALIP AĞIRLIĞI GEWICHT OBERWERKZEUG PESO UTENSILE SUPERIORE HMOTNOST H NASTROJE CIEZAR NARZ. GÖRNEGO ÖVERVERKTYGETS VIKT	- TOP TOOL WEIGHT - PESO DEL PUNZÓN - POIDS DU POINSON - YLATYOKALUN PAINO - VEKT ÖVERVERKTOEY - GEWICHT BOVENSTEMPEL	66	Kg
ALT KALIP AĞIRLIĞI GEWICHT UNTERWERKZEUG PESO UTENSILE INFERIORE HMOTNOST S NASTROJE CIEZAR NARZ. DOINEGO UNDERVERKTYGETS VIKT	- BOTTOM TOOL WEIGHT - PESO DE LA MATRIZ - POIDS DELA MATRICE - ALATYOKALUN PAINO - VEKT UNDERVERKTOEY - GEWICHT MATRIJS	66	Kg
EN BREITE LARGHEZZA ŠIRKA SZEROKOSC DJUP	- WIDTH - ANCHO - LARGEUR - LEVEYS - BREDE - BREEDTE	2360	mm
BOY LÄNGE LUNGHEZZA DELKA DLUGOSC LÄNGD	- LENGTH - LARGO - LONGUEUR - PITUUS - LENGDE - LENGTE	4570	mm
YÜKSEKLİK HÖHE ALTEZZA VÝŠKA WYSOKOSC HÖJD	- HEIGHT - ALTO - HAUTEUR - KORKEUS - HOEYDE - HÖGDJE	2910	mm
AĞIRLIK GEWICHT PESO HMOTNOST CIEZAR MÄSKÖVIKT	- WEIGHT - PESO - POIDS - PAINO - VEKT - GEWICHT	3610	Kg
DURMAZLAR MAKİNA SANAYİ ve TİCARET A.Ş. Organize Sanayi Bölgesi 75. Yıl Bulvarı BURSA / TÜRKİYE Tel: +90 224 219 18 00 pbx. Fax: +90 224 242 75 80 MADE IN TURKEY			