



Rottweg 17 • D 48683 Ahaus
Tel. (0 25 61) 93 84-0
Fax (0 25 61) 93 84 36
Internet: www.ab-maschinen.de
E-Mail: info@ab-maschinen.de

Schweißtechnik
Lagereinrichtungen
Industriebedarf
Werksvertretungen
Gebrauchtmaschinen

BAYKAL APHS 31.300 (1008-9308242)



Control type
CNC

Construction year
2013

Machine no.
1008-9308242

Make
BAYKAL

Location
Ahaus

** current new price ~ 135.000 euros

- in checked condition - machine video -
<https://www.youtube.com/watch?v=IT0APHnn9Js>

Press brake with special equipment

- * increased installation height
- * increased cylinder stroke
- * and increased bending beam speeds

Equipment:

- DELEM CNC control model DA 66T (touch screen)
- * 2D graphic touch screen programming mode
- * 17" high-resolution color TFT
- * Complete Windows application suite
- * Delem Modusys compatibility (module scalability and adaptivity)
- * USB, peripheral connection

* swiveling control unit, front left

- motorized back stop with R axis, on ball screws
- X = 800 mm R = 250 mm with 2 stop fingers
- CNC controlled axes: Y1 - Y2 - X - R - Z1 + Z2 - C (crowning) + AP1
- 2x CNC electrically movable stop fingers
- electrical crowning, controlled via CNC
- Safety device behind the machine
- FIESSLER AKAS laser protective device in front of the machine
- 2x front support arms "Sliding system", with T-slot and tilting cam
- 1x freely movable double foot control
- CE mark / declaration of conformity
- Control cabinet, left side
- Operating instructions

** Special accessories included:

- WILA hydraulic tool clamping at the top
- WILA hydraulic tool clamping at the bottom
- 1x CNC controlled bending aid (AP1)
- "Parking" area for bending aid

Machine attributes

pressure:	300 t
chamfer lenght:	3100 mm
distance between columns:	2550 mm
column arm:	500 mm
ram stroke speed:	110 mm/sec
return speed:	100 mm/sec
work speed:	8,0 mm/sec
work stroke:	420 mm
dayligh:	870 mm
table height:	905 mm
oil volume:	280 ltr.
voltage:	400 Volt
working pressure:	283 bar
Number of working hours:	~ 21.835 h
total power requirement:	23,0 kW
weight:	18.250 kg
Dimensions (HxWxD):	4550 x 2250 x 3300 mm

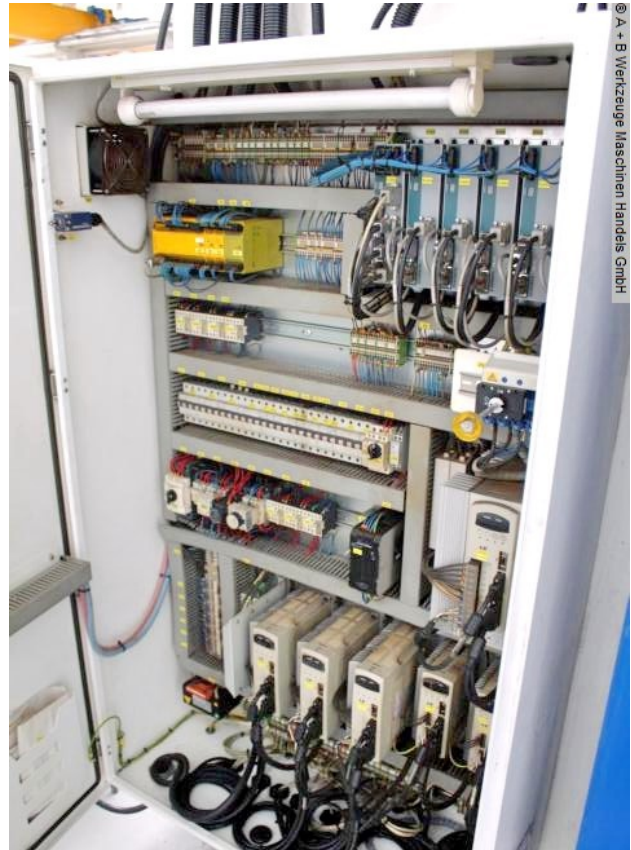
Machine images





Rottweg 17 • D 48683 Ahaus
Tel. (0 25 61) 93 84-0
Fax (0 25 61) 93 84 36
Internet: www.ab-maschinen.de
E-Mail: info@ab-maschinen.de

Schweißtechnik
Lagereinrichtungen
Industriebedarf
Werkvertretungen
Gebrauchtmachines





Rottweg 17 • D 48683 Ahaus
Tel. (0 25 61) 93 84-0
Fax (0 25 61) 93 84 36
Internet: www.ab-maschinen.de
E-Mail: info@ab-maschinen.de

Schweißtechnik
Lagereinrichtungen
Industriebedarf
Werksvertretungen
Gebrauchtmaschinen

© A + B Werkzeuge Maschinen Handels GmbH

TYPENSCHILD	
Hersteller	BAYKAL Mak. San.Tic. A.Ş. Bursa / Türkei
Maschinenart	Hydraulische Abkantpresse
Typ	APHS 31300
Baujahr	11/2013
Maschinen Nr.	20248
Presskraft	ton 300
Abkantlänge	mm 3100
Betriebsspannung	V / Hz / Ph 400/50/3
Motor Leistung	kW 22
Arbeitsdruck	bar 265
Kolbenhub min.	mm
Kolbenhub max	mm 470
Gewicht Maschine	kg 10000
Gewicht Oberwerkzeug	kg 100
Gewicht Unterwerkzeug	kg 450
Länge	mm 4440
Breite	mm 2150
Höhe	mm 3000
Max. Nachlaufzeit	ms 80
Kleinster Sicherheitsabstand	mm