



Rottweg 17 • D 48683 Ahaus
Tel. (0 25 61) 93 84-0
Fax (0 25 61) 93 84 36
Internet: www.ab-maschinen.de
E-Mail: info@ab-maschinen.de

Schweißtechnik
Lagereinrichtungen
Industriebedarf
Werksvertretungen
Gebrauchtmaschinen

BAYKAL APHS 125040 (1008-9308439)



Control type
CNC

Construction year
2015

Machine no.
1008-9308439

Make
BAYKAL

Location
Ahaus

- ** current new price approx. 65.000 euros
- ** very rarely used
- ** with approx. 1.070 operating hours (!!)
- ** good / well-maintained condition
- ** special price on request

- in checked condition - machine video -

<https://www.youtube.com/watch?v=Q-qCGgHopIQ>

BAYKAL APHS CNC press brake:

- * increased installation height
 - * increased cylinder stroke
 - * and increased bending beam speeds
-

Equipment:

- CNC electro-hydraulic press brake
- DELEM CNC control model "DA-66T" graphics/touchscreen

- * 2D graphic touchscreen programming mode
- * 3D display in simulation and production
- * 17" color TFT screen with high resolution
- * Bending sequence calculation
- * Product programming and display in actual size
- * USB interface
- * swiveling front left
- CNC controlled axes: Y1 - Y2 - X - R
- CNC electro-motorized back stop (X axis)
- * on ball screws
- * travel speed .. 500 mm/s
- * with 2x manually adjustable stop fingers (Z Axis)
- CNC electro-motor height adjustment (R axis)
- * Travel path .. 250 mm
- * Travel speed .. 350 mm/s
- WILA electro-hydraulic upper tool clamping "NEW STANDARD PRO"
- * including split upper tools
- ROLLERI electro-hydraulic lower tool clamping "SYSTEM A"
- * including split lower tools
- Safety device at the rear: light barrier
- BOSCH/HOERBIGER hydraulic components
- SIEMENS electrical components
- FIESSLER AKAS laser protection device in front of the machine
- 2x front support arms with SLIDING system (HIWIN plain bearings)
- 1x freely movable double foot control
- Operating instructions including circuit and hydraulic diagram

Machine attributes

pressure:	40.0 t
chamfer length:	1250 mm
distance between columns:	1070 mm
column arm:	410 mm
ram stroke speed:	160 mm/sec
work speed:	10.0 mm/sec
return speed:	130 mm/sec
work stroke:	215 mm
daylight:	455 mm
table height:	810 mm
table width:	60.0 mm
control:	DA 66T
operating pressure:	max. 255 bar
Number of working hours:	1.070 h
oil volume:	80.0 ltr.
voltage:	400 V
engine output:	4.0 kW
Weight:	3600 kg
range L-W-H:	1900 x 1700 x 2400 mm

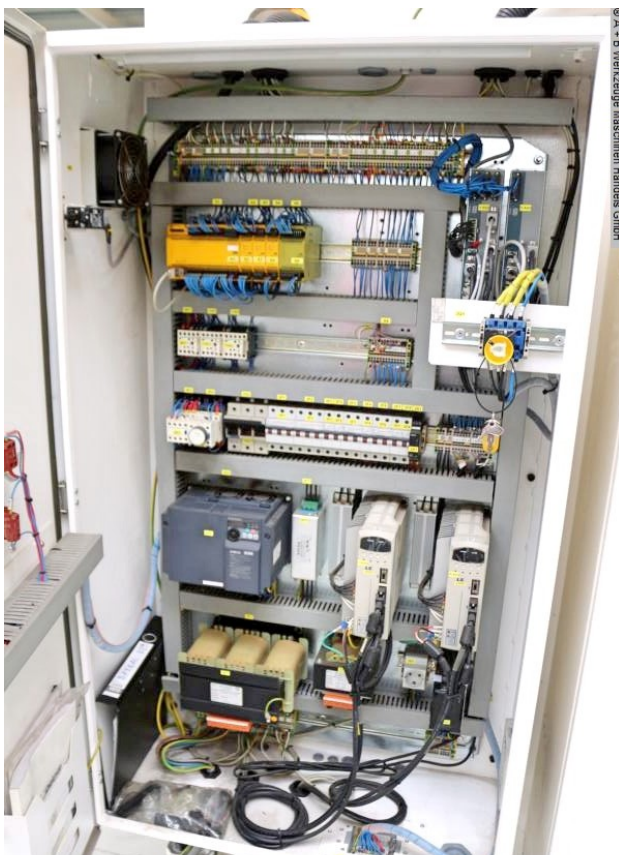
Machine images





Rottweg 17 • D 48683 Ahaus
Tel. (0 25 61) 93 84-0
Fax (0 25 61) 93 84 36
Internet: www.ab-maschinen.de
E-Mail: info@ab-maschinen.de

Schweißtechnik
Lagereinrichtungen
Industriebedarf
Werkvertretungen
Gebrauchtmaschinen





Rottweg 17 • D 48683 Ahaus
Tel. (0 25 61) 93 84-0
Fax (0 25 61) 93 84 36
Internet: www.ab-maschinen.de
E-Mail: info@ab-maschinen.de

Schweißtechnik
Lagereinrichtungen
Industriebedarf
Werksvertretungen
Gebrauchtmaschinen

© A + B Werkzeuge Maschinen Handels GmbH

TYPENSCHILD



Hersteller	BAYKAL Mak. San.Tic. A.Ş. Bursa / Türkei	
Maschinenart	Hydraulische Abkantpresse	
Typ	APHS 125040	
Baujahr	01/2015	
Maschinen Nr.	21771	
Presskraft	ton	40
Abkantlänge	mm	250
Betriebsspannung	V / Hz / Ph	400/50/3
Motor Leistung	kW	4
Arbeitsdruck	bar	255
Kolbenhub min.	mm	
Kolbenhub max.	mm	215
Gewicht Maschine	kg	3600
Gewicht Oberwerkzeug	kg	20
Gewicht Unterwerkzeug	kg	30
Länge	mm	1900
Breite	mm	1700
Höhe	mm	2400
Max. Nachlaufzeit	ms	80
Kleinster Sicherheitsabstand	mm	